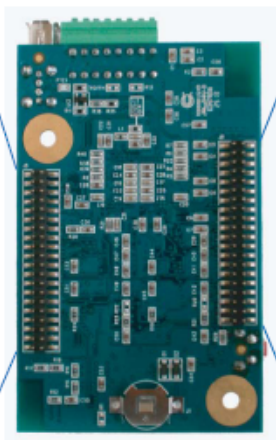


Signal Name	Pin #	Pin #	Signal Name
I2C0_SDA	1	2	RMII_TXD0
I2C0_SCL	3	4	RMII_TXD1
I2C1_SDA	5	6	RMII_TXEN
I2C1_SCL	7	8	RMII_RXD0
Reserved	9	10	RMII_RXD1
Reserved	11	12	RMII_RX_ER
SPI0_SCK	13	14	RMII_CLK
SPI0_SSSEL	15	16	RMII_CRS
SPI0_MISO	17	18	RMII_MDIO
SPI0_MOSI	19	20	RMII_MDC
SPI1_SCK	21	22	PWM_OUT0
SPI1_SSSEL	23	24	PWM_OUT1
SPI1_MISO	25	26	PWM_OUT2
SPI1_MOSI	27	28	PWM_OUT3
UART3_TXD	29	30	RESET_OUTM
UART3_RXD	31	32	GPIO7
GPIO9	33	34	GPIO8
GND	35	36	+5V
GND	37	38	+5V
GND	39	40	+5V



Signal Name	Pin #	Pin #	Signal Name
LCD_VD3	1	2	TS_IRQ#
LCD_VD4	3	4	LCD_HSYNC
LCD_VD5	5	6	LCD_VSYNC
LCD_VD6	7	8	LCD_DE
LCD_VD7	9	10	LCD_PWR_EN
GND	11	12	LCD_DCLK
LCD_VD10	13	14	GND
LCD_VD11	15	16	GPIO0
LCD_VD12	17	18	GPIO1
LCD_VD13	19	20	GPIO2
LCD_VD14	21	22	GPIO3
LCD_VD15	23	24	GPIO4
GND	25	26	GPIO5
LCD_VD19	27	28	GPIO6
LCD_VD20	29	30	GND
LCD_VD21	31	32	ADC0
LCD_VD22	33	34	ADC1
LCD_VD23	35	36	ADC2
GND	37	38	DAC_OUT
Reserved	39	40	GND